



# Success Stories in Community Energy Planning

Sustainability Summit

May 5, 2023

IG: [Sustainable\\_Jersey](#) | Twitter: [@SJ\\_Program](#) and [@SJ\\_Schools](#) | FB: [@SustainableJersey](#) | LinkedIn: [sustainable-jersey](#)

# Speakers

## **Nancy Quirk**

Senior Energy Program Manager  
Sustainable Jersey

## **Michele Alonso**

Director of Planning and Redevelopment  
City of Asbury Park

## **Nicole Miller**

Newark Green Team Chair  
Newark City



# Community Energy Plan Grant Program

Create a Community Energy Plan for your local community that aligns with the State's Energy Master Plan.

## What is a Community Energy Plan?

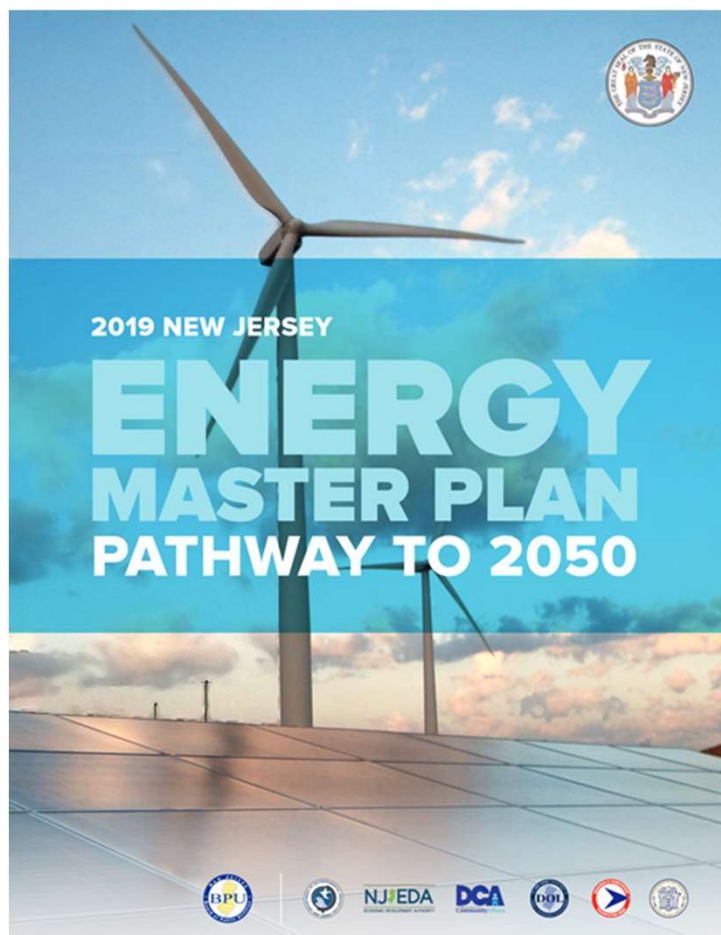
Community Energy Plans help communities effectively organize to rapidly lower greenhouse gas emissions by reducing energy use and expanding sustainable energy production. A Community Energy Plan establishes priority sustainable energy initiatives based on demonstrated effectiveness, unique local factors, and co-benefits, such as improved local air quality, energy savings for residents, and workforce development. Many of these initiatives involve collaboration between municipalities, businesses, nonprofits, and residents.

A Community Energy Plan is developed by a team of local municipal staff, elected officials, relevant municipal board and commission members, and community representatives. This planning team integrates the perspectives of the broader community with established best practices for effectively lowering greenhouse gas emissions on the local level.



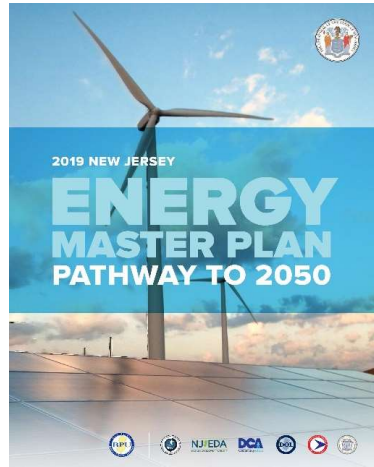
# New Jersey Energy Master Plan

---



## EMP Strategies

1. Reduce Energy Consumption from Transportation
2. Accelerate Renewable Energy
3. Maximize Energy Efficiency and Conservation
4. Reduce Energy Consumption from Buildings
5. Modernize NJ's Energy System
6. Support Community Energy Planning and Support Participation by Low- and Moderate-Income and Environmental Justice Communities
7. Expand the Clean Energy Innovation Economy



Community Energy Plans

# What is a Community Energy Plan?

. . . a tool to prioritize initiatives

- to promote energy efficiency
  - residential, multifamily
  - commercial, nonprofits, government
- to reduce transportation emissions
  - passenger vehicles
  - government fleet
  - local fleet operators
- to support renewable energy
  - zoning and permitting
  - outreach and education

. . . a process that includes

- municipal decision makers
- community stakeholders
- community education and outreach

. . . helps organize to

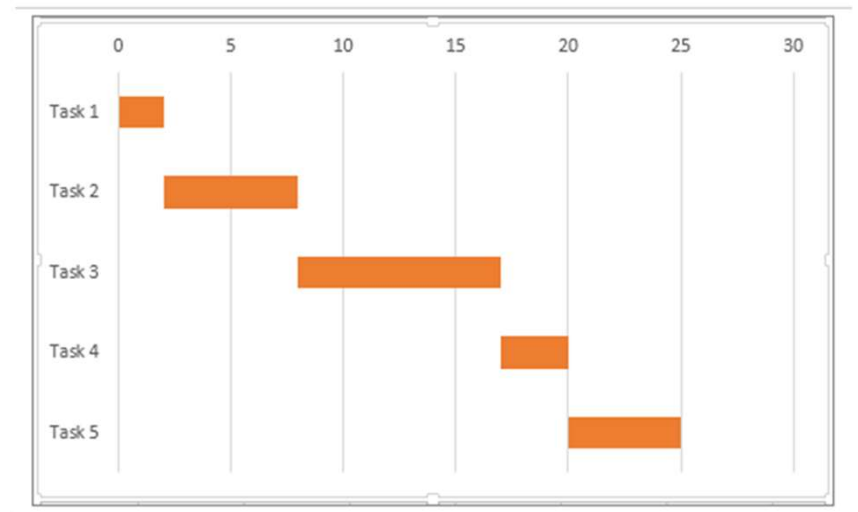
- reduce energy use
- curtail greenhouse gas emissions
- enhance energy resilience

. . . provides a timeline for

- implementation of key initiatives
- identification of funding sources

# Creating a CEP

- Create a plan for 3-5 years into the future
- Fit the plan to the community
  - Target community needs
  - Take advantage of community opportunities
- Job creation/workforce development
- Engage stakeholders
  - Local nonprofits for energy efficiency outreach
  - Local auto dealers for EV initiatives
  - Municipal departments, boards, commissions
    - Economic development
    - Planning board
    - Environmental commission



# What's in a Community Energy Plan?

1. Introduction
2. Community Profile
3. Work Plan (including Implementation Timeline/Next Steps)
  - Strategy 1: Transportation
  - Strategy 2: Renewable Energy and Distributed Energy Resources
  - Strategy 3: Energy Efficiency and Conservation
  - Strategy 4: Reduce Energy Consumption in Buildings
  - Strategy 6: Support Participation by LMI/EJ Communities
  - Strategy 7: Clean Energy Innovation Economy



# Creating a Team

- Liaison to governing body
- Administration
- Municipal staff
  - Facilities
  - Public Works
  - Engineering
- Other possible members:
  - Community Development
  - Fire/Police
  - Green Team/other volunteers
- Set meeting schedule for full team (e.g., monthly)



# Sustainable Jersey Resources for Creating a Community Energy Plan

- Sustainable Jersey Data Center
- Sustainable Energy Communities Guide
- Community Energy Plan Workplan Template
- Model Community Energy Plan



The screenshot shows the Sustainable Jersey website interface. At the top left is the Sustainable Jersey logo with the tagline "A Better Tomorrow. One Community at a Time". The navigation menu includes "Certification", "Actions", "Grants", "Events", "Resources", and "Get In". The main content area is titled "Energy Guidebooks, Toolkits & Other Publications". It includes a sub-header "The Energy publications consist of guidebooks and other publications. Publications are listed chronologically within each section with the most recent publications first. Navigate to the different data resources using the links below." and a list of links under the heading "Energy Guidebooks & Toolkits".

**Sustainable Jersey**  
A Better Tomorrow. One Community at a Time

Certification Actions Grants Events Resources Get In

> **Data Center**

> **Publications**

Research Reports

**Energy Guidebooks**

Technology Plans

Sustainable State of the State Reports

> **Green Team Resources**

> **Presentations**

> **Funding Database**

**Energy Guidebooks, Toolkits & Other Publications**

The Energy publications consist of guidebooks and other publications. Publications are listed chronologically within each section with the most recent publications first. **Navigate to the different data resources using the links below.**

**Energy Guidebooks & Toolkits**

- [Sustainable Jersey Guide for Sustainable Energy Communities](#)
- [Community Energy Plan Workplan Template](#)
- [Community Solar Guidebook](#)
- [Community Solar Resource Page](#)
- [Energy Efficiency Outreach Toolkits](#)
- [Alternative Fuel Vehicle Procurement Guide](#)
- [Renewable Government Energy Aggregation: Sustainable Jersey How-To-Guide](#)
- [How to Implement an Energy Savings Improvement Plan: Sustainable Jersey How-To-Guide](#)

[sustainablejersey.com/resources/publications/energy-guidebooks/](https://sustainablejersey.com/resources/publications/energy-guidebooks/)



[sustainablejersey.com/resources/data-center/](https://sustainablejersey.com/resources/data-center/)

Certification

Actions

Grants

Events

Resources

Get Involved

✓ **Data Center**

**Sustainable Jersey  
Data Resources**

State Data Resources

> **Publications**

> **Green Team  
Resources**

> **Presentations**

> **Funding Database**

## Sustainable Jersey Data Resources

The following resources are data files and interactive maps that Sustainable Jersey processes and prepares. **Navigate to the different data resources using the links below.**

### Municipal Data

- [Community Profile Data by Municipality](#)
- [Aggregated Community-Scale Utility Energy Data](#)
- [Vehicle Miles Traveled \(VMT\)/On-Road Vehicle GHG Emissions Data](#)
- [Electric Vehicle \(EV\) Ownership Data](#)
- [Community-Scale Greenhouse Gas \(GHG\) Emissions Data](#)
- [Energy Efficiency Program Participation \(2008-2021\)](#)
- [NJCEP Local Government Projects 2008-2021](#)

# Community Profile Data

## 2020 Community Profile Data by Municipality

\* Further explanation on Notes sheet

Municipality	County	Square Miles	Population Characteristics								
			Population	% White	% Black	% Asian, Pacific Islander	% Other	% Hispanic or Latino Origin*	Households	Median Household Income	Percent of Population in Poverty
Aberdeen township	Monmouth	5.6	18,729	77%	9%	7%	7%	13%	7,822	\$108,132	2.9%
Absecon city	Atlantic	7.2	8,471	68%	12%	6%	14%	17%	3,109	\$69,293	9.2%
Alexandria township	Hunterdon	27.7	4,769	98%	0%	2%	0%	1%	1,766	\$127,234	4.4%
Allamuchy township	Warren	20.3	4,640	89%	7%	3%	1%	6%	2,195	\$109,212	1.9%
Allendale borough	Bergen	3.1	6,757	80%	1%	15%	4%	2%	2,235	\$157,958	2.5%
Allenhurst borough	Monmouth	0.3	492	87%	1%	2%	10%	5%	191	\$100,625	2.8%
Allentown borough	Monmouth	0.6	1,740	89%	7%	0%	4%	4%	676	\$100,769	2.8%
Allaway township	Salem	33.9	3,359	90%	5%	1%	4%	3%	1,203	\$86,583	3.1%
Alpha borough	Warren	1.7	2,141	91%	0%	1%	7%	8%	948	\$75,612	4.8%
Alpine borough	Bergen	6.4	1,459	61%	3%	32%	3%	7%	518	\$161,346	6.2%
Andover borough	Sussex	1.4	675	90%	2%	2%	6%	1%	261	\$64,844	3.6%
Andover township	Sussex	20.8	5,914	91%	2%	5%	2%	1%	2,076	\$113,947	4.9%
Asbury Park city	Monmouth	1.5	15,536	42%	42%	2%	13%	17%	7,185	\$53,655	22.5%
Atlantic City city	Atlantic	15.9	37,793	26%	32%	16%	26%	33%	15,775	\$29,526	35.2%
Atlantic Highlands borough	Monmouth	1.2	4,312	96%	0%	1%	3%	7%	1,829	\$103,712	3.6%
Audubon borough	Camden	1.5	8,656	92%	5%	0%	2%	3%	3,304	\$90,335	2.3%
Audubon Park borough	Camden	0.2	969	99%	0%	0%	1%	1%	540	\$46,855	8.8%
Avalon borough	Cape May	5.0	1,456	99%	0%	0%	0%	1%	744	\$120,000	3.6%
Avon-by-the-Sea borough	Monmouth	0.5	1,731	94%	1%	1%	4%	8%	876	\$89,615	8.9%
Barnegat Light borough	Ocean	1.3	461	86%	0%	13%	1%	1%	220	\$75,833	4.2%
Barnegat township	Ocean	40.3	23,155	90%	7%	1%	3%	5%	9,075	\$77,428	7.9%
Barrington borough	Camden	1.6	6,678	93%	3%	2%	2%	4%	2,979	\$78,708	5.0%
Bass River township	Burlington	78.3	1,225	86%	0%	1%	12%	9%	488	\$71,618	12.2%
Bay Head borough	Ocean	0.7	1,050	94%	0%	1%	5%	3%	472	\$102,000	3.1%
Bavonne city	Hudson	7.7	65,112	62%	10%	10%	18%	35%	24,784	\$69,511	12.4%

2020

2015

Notes



# Community GHG Emissions

## Community-Scale Greenhouse Gas (GHG) Emissions - Metric Ton Carbon Dioxide Equivalent (MTCO2e)

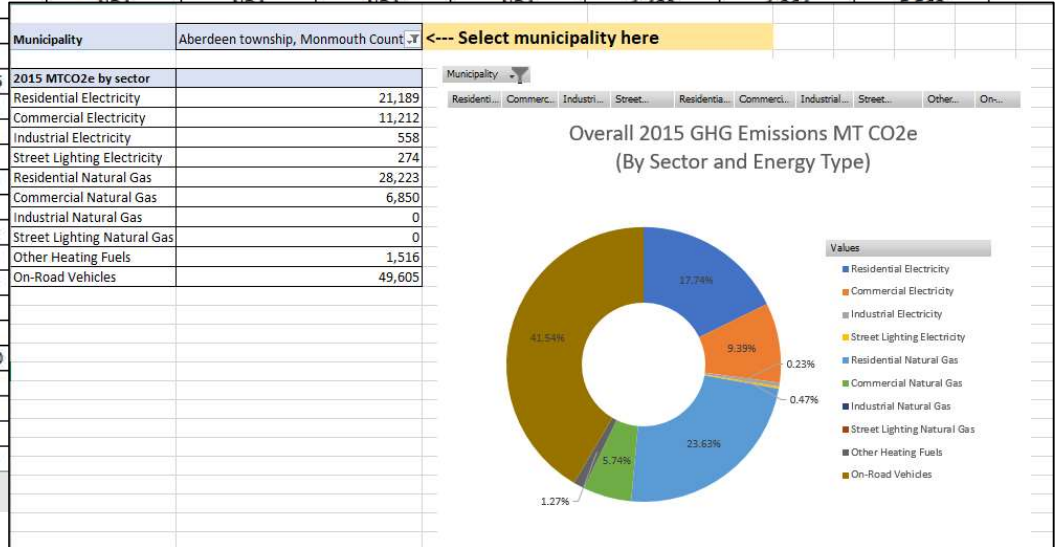
June 2022

Data Acronyms: CWC - Combined with Commercial NDA - No Data Available

Highlighted Data: Data + CWC Data + NDA

\* Further information on Notes Sheets

Municipality	County	Year	Residential Electricity	Commercial Electricity	Industrial Electricity	Street Lighting Electricity	Residential Natural Gas	Commercial Natural Gas	Industrial Natural Gas	Street Lighting Natural Gas	Other Heating Fuels	On-Road Vehicles	Total MTCO2e
Aberdeen township	Monmouth	2015	21,189	11,212	558	274	28,223	6,850	CWC	NDA	1,516	49,605	119,427
Absecon city	Atlantic	2015	16,368	19,364	NDA	168	8,840	18,884	NDA	NDA	1,247	164,679	229,551
Alexandria township	Hunterdon	2015	8,587	2,181	7	9	NDA	NDA	NDA	NDA	10,782	19,086	40,652
Allamuchy township	Warren	2015	7,507	2,488	318	59	7,584	262	NDA	NDA	2,955	18,071	39,244
Allendale borough	Bergen	2015	10,265	10,624	NDA	NDA	19,302	6,786	210	NDA	764	27,772	75,725
Allenhurst borough	Monmouth	2015	1,784	1,972	7	33	3,038	465	CWC	NDA	111	1,488	8,898
Allentown borough	Monmouth	2015	2,467	1,939	83	78	3,099	1,412	34	NDA	728	4,314	14,155
Alloway township	Salem	2015	4,661	1,214	NDA	27	944	NDA	NDA	NDA	9,975	9,783	26,604
Alpha borough	Warren	2015	3,004	6,187	749	18	1,971	1,338	NDA	NDA	2,827	10,647	26,741
Alpine borough	Bergen	2015	7,594	NDA	NDA	NDA	12,648	779	NDA	NDA	75	6,379	27,474
Andover borough	Sussex	2015	1,115	962	26	14	NDA	NDA	NDA	NDA	NDA	NDA	NDA
Andover township	Sussex	2015	9,698	4,870	324	19	NDA	NDA	NDA	NDA	NDA	NDA	NDA
Asbury Park city	Monmouth	2015	12,881	21,040	1,107	472	NDA	NDA	NDA	NDA	NDA	NDA	NDA
Atlantic City city	Atlantic	2015	32,046	291,291	14	2,685	NDA	NDA	NDA	NDA	NDA	NDA	NDA
Atlantic Highlands borough	Monmouth	2015	6,909	4,039	42	116	NDA	NDA	NDA	NDA	NDA	NDA	NDA
Audubon borough	Camden	2015	10,740	8,843	41	141	NDA	NDA	NDA	NDA	NDA	NDA	NDA
Audubon Park borough	Camden	2015	NDA	NDA	NDA	1	NDA	NDA	NDA	NDA	NDA	NDA	NDA
Avalon borough	Cape May	2015	16,437	5,773	NDA	139	NDA	NDA	NDA	NDA	NDA	NDA	NDA
Avon-by-the-Sea borough	Monmouth	2015	3,306	1,203	53	33	NDA	NDA	NDA	NDA	NDA	NDA	NDA
Barnegat Light borough	Ocean	2015	NDA	NDA	NDA	NDA	NDA	NDA	NDA	NDA	NDA	NDA	NDA
Barnegat township	Ocean	2015	35,803	10,821	173	409	NDA	NDA	NDA	NDA	1,516	NDA	NDA
Barrington borough	Camden	2015	8,433	7,434	77	154	NDA	NDA	NDA	NDA	NDA	NDA	NDA
Bass River township	Burlington	2015	2,412	1,297	1,817	23	NDA	NDA	NDA	NDA	NDA	NDA	NDA
Bay Head borough	Ocean	2015	3,372	1,212	2,040	8	NDA	NDA	NDA	NDA	NDA	NDA	NDA
Bayonne city	Hudson	2015	52,156	58,008	11,571	1,680	NDA	NDA	NDA	NDA	NDA	NDA	NDA
Beach Haven borough	Ocean	2015	19,804	6,017	11	107	NDA	NDA	NDA	NDA	NDA	NDA	NDA
Beachwood borough	Ocean	2015	13,805	2,553	81	51	NDA	NDA	NDA	NDA	NDA	NDA	NDA
Bedminster township	Somerset	2015	12,868	30,782	174	15	NDA	NDA	NDA	NDA	NDA	NDA	NDA
Belleville township	Essex	2015	30,925	27,496	1,913	736	NDA	NDA	NDA	NDA	NDA	NDA	NDA



GHG Emissions Data

2015 GHG Emissions Chart

Notes





# Model Community Energy Plan

## The Township of Gotham's Community Energy Plan



OCTOBER 2023



# Model Plan: Introduction

## I. Introduction

New Jersey is both a significant source of greenhouse gases (GHG) emissions and a state particularly vulnerable to climate change. Increasing heat waves, intense storms, and sea-level rise caused by climate change will dramatically alter our coastal state for many years to come (NJDEP, 2020). According to the New Jersey Department of Environmental Protection's [2019 Statewide Greenhouse Gas Emissions Inventory](#), New Jersey adds almost 100 million metric tons of CO<sub>2</sub>e to the atmosphere annually. New Jersey can mitigate the local and global impacts of climate change with a rapid transition from the current GHG-intensive energy system to one that optimizes energy use and produces energy with minimal GHG emissions.

Recognizing New Jersey's role in climate change mitigation, the State of New Jersey has established a goal of 100% clean energy in the state by 2050. [The New Jersey Energy Master Plan: Pathway to 2050](#) outlines the state's strategies for achieving that goal while also addressing issues of social and economic inequity. To promote action at the local level in support of the state's goals, the New Jersey Board of Public Utilities (NJBPU) launched the Community Energy Plan Grant Program, offering support and funding for municipalities to develop a Community Energy Plan.

### Co-benefits of Sustainable Energy

The sustainable energy transition offers an opportunity to realize various co-benefits in our community and beyond. Besides reducing GHG emissions, implementing this plan will improve:

- Public health
  - Lower concentrations of ground-level

“Plug and Play”  
introductory  
language

# Model Plan: Data

Copy and paste charts from  
Sustainable Jersey Data Center

## 4) GHG Emissions from Energy Use

In 2019, the total community-wide greenhouse gas emissions from stationary and transportation energy use in Gotham was 119,043 metric tons of CO<sub>2</sub>e. The largest share of community emissions came from residential natural gas use, followed by passenger light trucks and passenger cars. This suggests significant potential emissions reductions via efficiency improvements and electrification of both homes and residential vehicles.

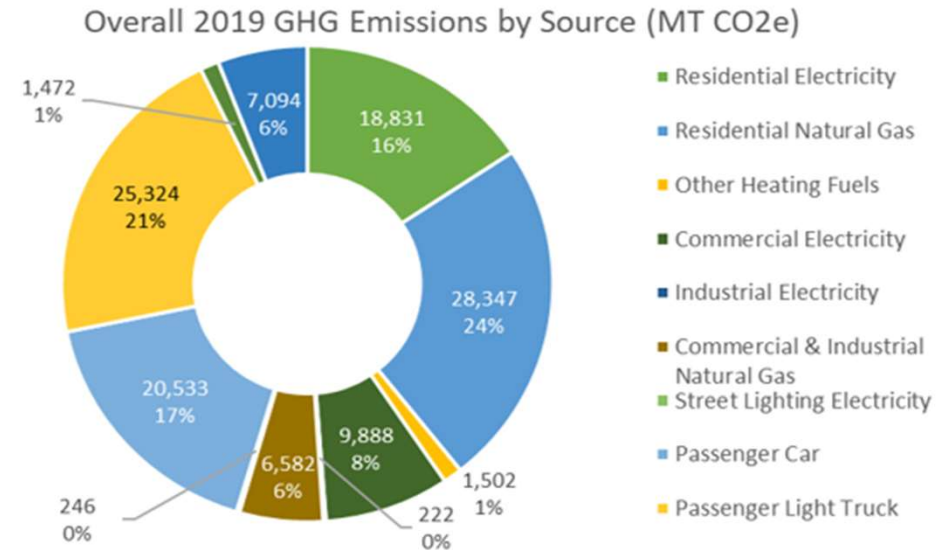


Chart 5. Overall GHG Emissions of Gotham for 2019 by Subsector  
Source: Sustainable Jersey. GHG Emissions by Municipality.



# Model Plan: Municipal Workplan

## Next steps:

1. Township Clerk establishes commercial energy efficiency outreach coordinator.
2. Outreach coordinator finds venue to hold workshop for large energy users to learn about utility incentive programs, NJCEP's Large Energy Users Program (LEUP), and PJM's Demand Response program.
3. Outreach coordinator contacts NJBPU and/or utility companies to request representatives to attend the workshop, then coordinates with reps to determine date/time of workshop.
4. Outreach coordinator calls largest energy users in Gotham according to New Jersey's Energy Benchmarking program.
5. Workshop held for large energy users.

## Initiative 3.4 Conduct Energy Efficiency Outreach to Large Energy Users

**Description:** Contact large energy users in the community to prompt interest in managing energy use, including participating in utility commercial energy efficiency incentive programs like Engineered Solutions and PJM's Demand Response program.

Lead	Start Date	Priority	Anticipated Length	Funding Sources
Township Clerk	August 2023	Medium	One year	N/A

### Departments involved:

- Economic Development Office
- Township Clerk

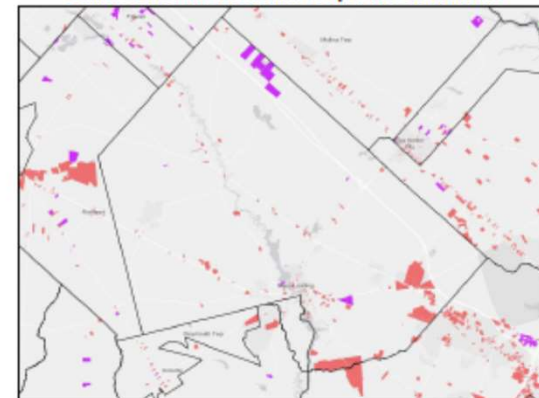
### Obstacles/Barriers:

- No significant barriers were identified

### Community notes:

As of 2019, there are 128 commercial and industrial properties in Gotham. The majority are located on Route 14. There are also some larger farms and agricultural processing facilities on Route 130. These properties may be well suited for commercial renewable energy generation and energy efficiency programs such as NJCEP's Large Energy Users Program (LEUP) or Energy Management solutions programs offered by the utility.

Commercial and Industrial Properties of Gotham



Map 4. Commercial and Industrial Properties of Gotham

# Case Studies in Community Energy Planning

## **Michele Alonso**

Director of Planning and Redevelopment  
City of Asbury Park

## **Nicole Miller**

Newark Green Team Chair  
Newark City

## Upcoming Events and Opportunities

### FREE ENERGY TECHNICAL ASSISTANCE FOR SCHOOLS AND MUNICIPALITIES IN ELIZABETHTOWN GAS, NEW JERSEY NATURAL GAS, AND SOUTH JERSEY GAS SERVICE TERRITORIES

Free technical assistance to identify and apply for utility incentives and New Jersey's Clean Energy Program (NJCEP) incentives for energy efficiency audits and facility upgrades. This technical assistance is funded by Elizabethtown Gas, New Jersey Natural Gas, and South Jersey Gas.

For more information please visit: [bit.ly/EnergyTAforMunisandSchools](http://bit.ly/EnergyTAforMunisandSchools)

### 2023 MUNICIPAL CERTIFICATION CYCLE

The next deadline to apply for certification is **May 12, 2023**. The final application deadline is **July 27, 2023**. View the full cycle timeline on the 2023 Certification Cycle page.

For more information please visit: [bit.ly/MuniCertCycle](http://bit.ly/MuniCertCycle)

### 2023 SUSTAINABLE COMMUNITIES GRANT PROGRAM

Atlantic City Electric and Sustainable Jersey are pleased to offer **\$50,000** to support municipal environmental stewardship and resiliency projects in Atlantic City Electric's service territory. Municipalities are encouraged to work with local organizations on applications, which are due **June 29, 2023**. An informational webinar will be held on **May 15, 2023 from 1:00pm - 2:00pm**.

For more information please visit:  
<http://www.bit.ly/SustainableCommunitiesGrantProgram>

### TRI-COUNTY SUSTAINABILITY GENERAL MEETINGS

This Sustainable Jersey Regional Hub will host virtual meetings on a variety of sustainability topics throughout the year. The next meeting is **May 31, 2023 from 7:00pm - 8:00pm**.

For more information please visit: <http://www.bit.ly/Tri-CountySustainability>

### 2023 SCHOOL CERTIFICATION CYCLE

The final deadline to apply for certification and Digital Schools Star Recognition is **June 15, 2023**. View the full cycle timeline on the 2023 Certification Cycle page.

For more information please visit: <http://www.bit.ly/SchoolsCertCycle>

### TREES FOR SCHOOLS PROGRAM, TREE-PLANTING GRANTS FOR NJ PUBLIC SCHOOLS, COLLEGES AND UNIVERSITIES

The Trees for Schools program will provide **\$2.5 million** in grants to New Jersey public school districts, county colleges and state colleges and universities to fund the planting of trees on campuses across New Jersey. Competitive grants of **\$10,000 to \$500,000** will fund costs associated with planning, site preparation, trees, planting, watering, monitoring and related expenses over a three-year period. Applications are due on **July 13, 2023**, for spring 2024 plantings. An informational webinar will be held on **May 18, 2023 from 3:00pm - 4:30pm**. The Trees for Schools program is a collaboration of the New Jersey Department of Environmental Protection, The College of New Jersey and Sustainable Jersey.

For more information please visit: [bit.ly/TreesforSchools](http://bit.ly/TreesforSchools)

# Sustainable Jersey Underwriters and Sponsors

## PROGRAM UNDERWRITERS



## GRANTS PROGRAM



## CORPORATE SPONSORS



\*Digital Schools Sponsor

# SUCCESS STORIES IN COMMUNITY ENERGY PLANNING

## Leading the Way to an Energy Plan

Michele Alonso, PP, AICP  
Director of Planning and Redevelopment  
City of Asbury Park, New Jersey

Asbury Park Green Team Administrator  
May 5, 2023



# Leading the Way to an Energy Plan

- ▶ Already focused on energy initiatives
  - ▶ Energy Fellow
  - ▶ Sustainable Monmouth Alliance Energy Aggregation Government Energy Program
  - ▶ NJ Direct Install
  - ▶ Leader in bike and scooter share
  - ▶ EV charging stations
  - ▶ Energy Savings Improvement Program (ESIP)

# Leading the Way to an Energy Plan



# Leading the Way to an Energy Plan

- ▶ Take it further
  - ▶ Electric vehicle car share
  - ▶ Electrify municipal fleet
  - ▶ Participate in community solar
  - ▶ Path to better communication



# Leading the Way to an Energy Plan

NJ Comfort Partners— including home heating and cooling, water heating, lighting, and major appliances.

Low Income Home Energy Assistance (LIHEAP)

NJ Natural Gas Gift of Warmth



## Get the Gift of Warmth (NJNG Customers Only)

Available to New Jersey Natural Gas customers, the Gift of Warmth program is designed to help those who have exhausted all other forms of energy assistance.



Funded by New Jersey Natural Gas and customer donations, those who are experiencing financial difficulties because of illness, high medical expenses, or other unanticipated circumstances may qualify.

To see if you qualify or for additional information about Gift of Warmth, please call 732-389-2204.

## Eligibility

2014 Income Guidelines  
(225% of the Federal Poverty Guidelines)

Size of Family	Monthly Income	Yearly Income
1	\$2,207	\$26,483
2	\$2,987	\$35,843
3	\$3,767	\$45,203

Add \$180 to the weekly income, \$780 to the monthly income, or \$9,360 to the yearly income for each additional member.



# Leading the Way to an Energy Plan

## How are we putting the plan together

- ▶ Technical Assistance from Sustainable Jersey
- ▶ Monthly meetings
- ▶ Template
- ▶ Green Team volunteers
- ▶ Advice
- ▶ Consultant

# Leading the Way to an Energy Plan

## How we are putting the plan together

- ▶ Green Team involvement
- ▶ Identify priorities
- ▶ What can be achieved short term v long term
- ▶ Subcommittee
- ▶ Work together on template

Thank you

[www.cityofasburkpark.com](http://www.cityofasburkpark.com)

FB [@CityofAsburyParkNJ](https://www.facebook.com/CityofAsburyParkNJ) and [@inAsburyParkNJ](https://www.facebook.com/inAsburyParkNJ)

Twitter [@inAsburyParkNJ](https://twitter.com/inAsburyParkNJ) and [@APCmtyEvents](https://twitter.com/APCmtyEvents)

Instagram [@CityofAsburyParkNJ](https://www.instagram.com/CityofAsburyParkNJ)

Michele Alonso

[michele.alonso@cityofasburypark.com](mailto:michele.alonso@cityofasburypark.com)



Success Stories in Community Energy Planning

**“What Can We Do to Make a Positive Impact?”**

Nicole Miller – SJ Sustainable Summit – May 2023



# Newark's Clean Energy Stakeholders

## General Public

- ❖ Virtual Community Outreach events
- ❖ Meetings with Newark Green Team and Newark Environmental Commission

## Organizations

- ❖ Outreach to public and private education institutions, faith-based institutions, chambers of commerce & community-based organizations.
- ❖ Outreach to Business- & Special-Improvement Districts (BIDs & SIDs)

## City Departments

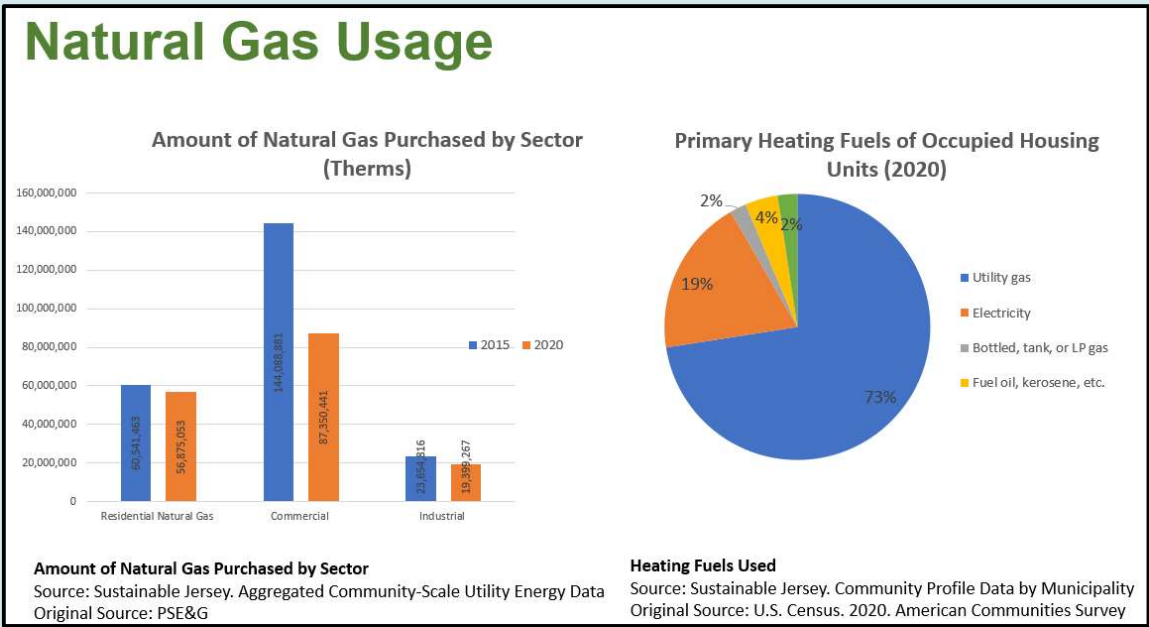
- ❖ Mayor's Office
- ❖ City Council
- ❖ Sustainability
- ❖ Engineering
- ❖ Public Works
- ❖ Economic & Housing Development
- ❖ Health & Community Wellness
- ❖ Invest Newark





# Newark's Current Energy Outlook

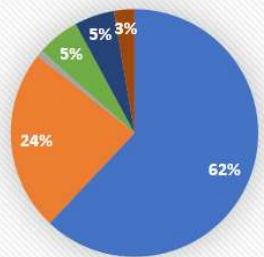
Energy usage data helps Newark evaluate the areas of greatest concern.



## Communicating Newark's Energy Needs

### Transportation

#### Means of Transportation to Work



■ Car, truck, or van ■ Public transport ■ Taxicab  
■ Motorcycle ■ Bicycle ■ Walked  
■ Other means ■ Worked at home

#### Means of Transportation to Work 2020

Source: Sustainable Jersey. Community Profile Data by Municipality  
Original Source: 2020 American Communities Survey

Energy usage data helps Newark evaluate areas of potential impact.

➤ What are low-hanging fruit opportunities for increasing public transportation ridership?

➤ How can land use planning increase walking and bike riding?

➤ Where will EV and e-mobility interventions have the most impact?



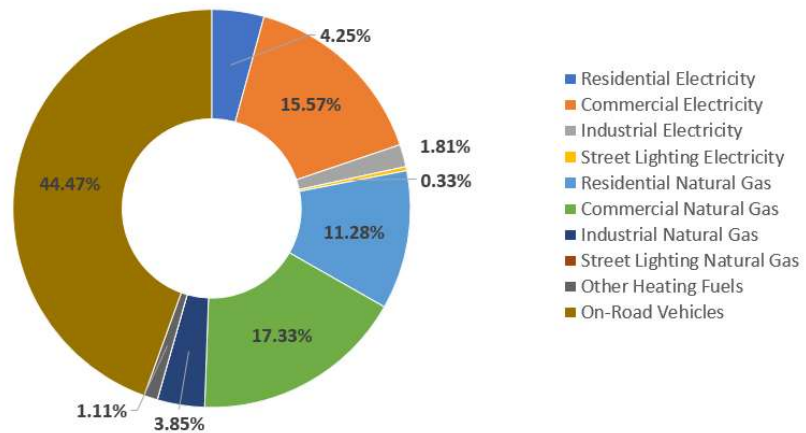
# Newark's Clean Energy Impact

Data shows Newark can make significant impact in GHG emissions:

- Reducing vehicles on the road or transitioning to EV
- Transitioning Commercial off utility gas to clean sources
- Transitioning Commercial Electric to clean or renewable sources

## GHG Emissions

2020 Community-Scale Energy-Related GHG Emissions by Sector and Energy Type (MT CO2e)

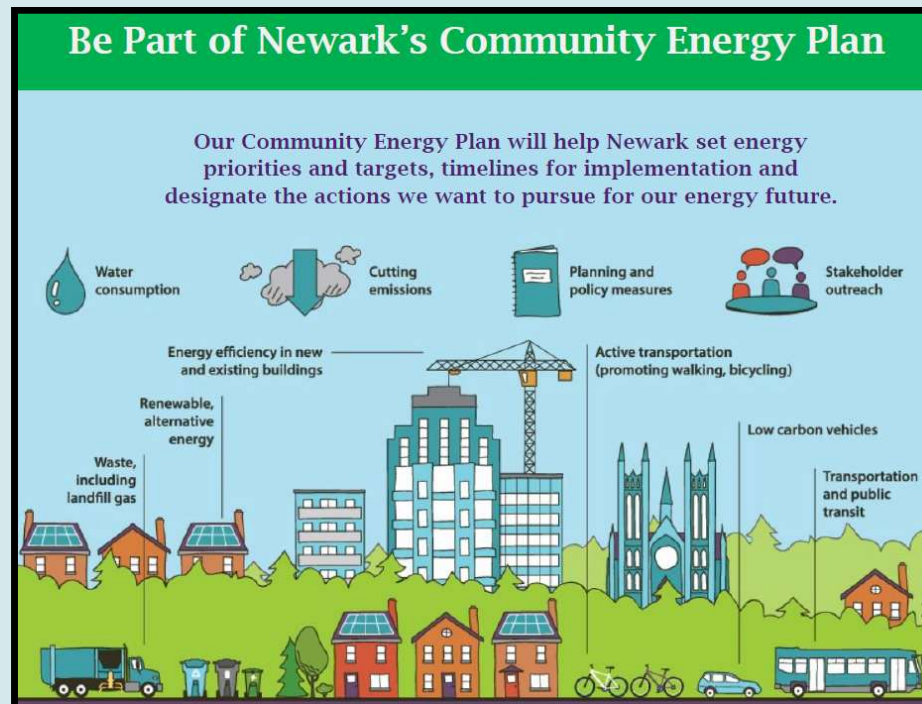


Source: Sustainable Jersey. Community-Scale Greenhouse Gas (GHG) Emissions Data

# Community Energy Planning

Step 1:

Convene community, organizational and city representative stakeholders.





# Community Energy Planning

Step 2:  
Determine which energy-related actions are important to the community and which will have the most impact.

<b>Strategy 4: Reduce Energy Consumption and Emissions from the Building Sector</b> .....
4.1 Construct New Municipal Buildings as Model Green Buildings .....
4.2 Encourage Benchmarking and Commissioning for Existing Buildings .....
4.3 Require Developers to Complete Green Development Checklist .....
4.4 Conduct Outreach Targeting New Construction in the Community .....



# Community Energy Planning

## Step 3:

Outline what team or group is taking leadership on this action and the specific requirements needed to ensure completion.

<b>EMP Strategy:</b> 4: Reduce Energy Use from the Building Sector	<b>Initiative:</b> 4.4 Conduct Outreach Targeting New Construction	
<b>Initiative lead:</b> Environmental Commission	<b>Initiative start date:</b> 12/2023	<b>Priority for muni:</b> Medium
<b>Anticipated initiative length:</b> 1 year	<b>Anticipated funding sources:</b> N/A	
<b>Departments involved:</b>	<b>Obstacles/Barriers:</b>	
<ul style="list-style-type: none"> <li>- Building Department / Code Enforcement</li> <li>- Mayor's Office</li> <li>- Office of Economic Development</li> </ul>	- None anticipated	
<b>Community notes (include current status, selected measure of success):</b>	<b>Next steps: (specific and tangible):</b>	
<ul style="list-style-type: none"> <li>- Township does not currently perform any outreach on new construction energy efficiency</li> <li>- Township has several new residential developments proposed or in progress</li> <li>- Success will be measured in number of new construction projects that utilize New Jersey's Clean Energy Program incentives for the years that follow outreach. The Environmental Commission seeks to double the annual number of applications to New Construction incentive programs for buildings in the township</li> </ul>	<ol style="list-style-type: none"> <li>1. Environmental Commission will gather and organize outreach materials on the topic of energy efficiency in new construction.</li> <li>2. Environmental Commission will set meeting with New Jersey's Clean Energy Program staff to create an outreach plan.</li> <li>3. Environmental Commission will delegate outreach to Building Department, Mayor's Office, and Office of Economic Development.</li> <li>4. Environmental Commission will coordinate with New Jersey's Clean Energy Program and municipal staff to host an informational event for local developers.</li> </ol>	




## Clean Energy Considerations

❖ Environmental Justice concerns including air, water and soil quality

❖ Workforce development opportunities and challenges

❖ Unintended consequences (such as resident displacement)

❖ *The cleanest energy is energy we never have to use: maximize energy efficiency*



# Thank You!

**Nancy Quirk**  
Sustainable Jersey  
quirkn@tcnj.edu

**Michele Alonso**  
City of Asbury Park  
Michele.Alonso@cityofasburypark.com

**Nicole Miller**  
Newark City  
nicolemiller97@gmail.com